



# Wildern Lane

East Hunsbury, Northampton

oriordanbond  
SALES & LETTINGS



# Wildern Lane

East Hunsbury

NN4 0SN

PRICE £240,000

An immaculately presented two double bedroom family home, situated in a cul-de-sac, within the popular area of East Hunsbury. This property offers accommodation over two floors.

Entrance hall with a door to a modern re-fitted kitchen benefitting from an integrated oven, hob, extractor and space for further white goods. There is a further door to a sitting/dining room offering space for furniture, a spiral staircase to the first floor and patio doors to the rear garden. To the first floor is access to the loft space, doors to two ample double bedrooms and a contemporary re-fitted bathroom. Outside, the property has a lawned front garden and driveway leading to an attached single garage. The rear garden is private and easterly facing, has a patio seating area, lawn, mature shrubs and bushes and enclosed by timber fencing. Further benefits include uPVC double glazing and gas radiator heating. (A/611/M)

### Additional information

- Council Tax Band: B
- Energy Efficiency Rating:

### Viewing

Viewing strictly by appointment – details below

### Disclaimer

O’Riordan Bond Estate Agents Limited has not tested apparatus, equipment, fittings or services and so cannot verify they are in working order. The buyer is advised to obtain verification from their solicitor or surveyor.

O’Riordan Bond Hunsbury Sales

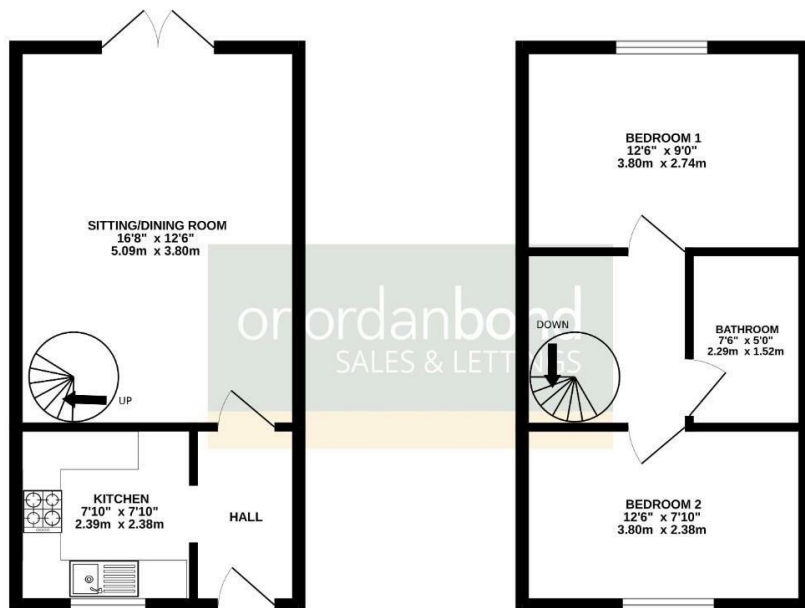
01604 706007

[hunsbury@oriordanbond.co.uk](mailto:hunsbury@oriordanbond.co.uk)



GROUND FLOOR  
306 sq.ft. (28.4 sq.m.) approx.

1ST FLOOR  
306 sq.ft. (28.4 sq.m.) approx.



TOTAL FLOOR AREA: 611 sq.ft. (56.8 sq.m.) approx.

Whilst every attempt has been made to ensure the accuracy of the floorplans contained here, measurements of doors, windows, rooms and any other items are approximate and no responsibility is taken for any error, omission or mis-statement. This plan is for illustrative purposes only and should be used as such by any prospective purchaser. The services, systems and appliances shown have not been tested and no guarantee as to their operability or efficiency can be given. Made with Metrepro c2020